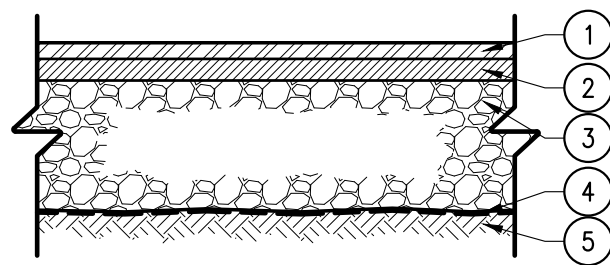


NOTES:

- ALL STORM SEWER OUTLETS TO HAVE A CATCH BASIN TRAP INSTALLED ON 12" OR LESS PIPES, NEENAH FOUNDARY R-3700 SERIES OR APPROVED EQUAL.
- ALL STORM STRUCTURES TO HAVE A MINIMUM 2' SUMP.

**CATCH BASIN DETAIL**

N.T.S.



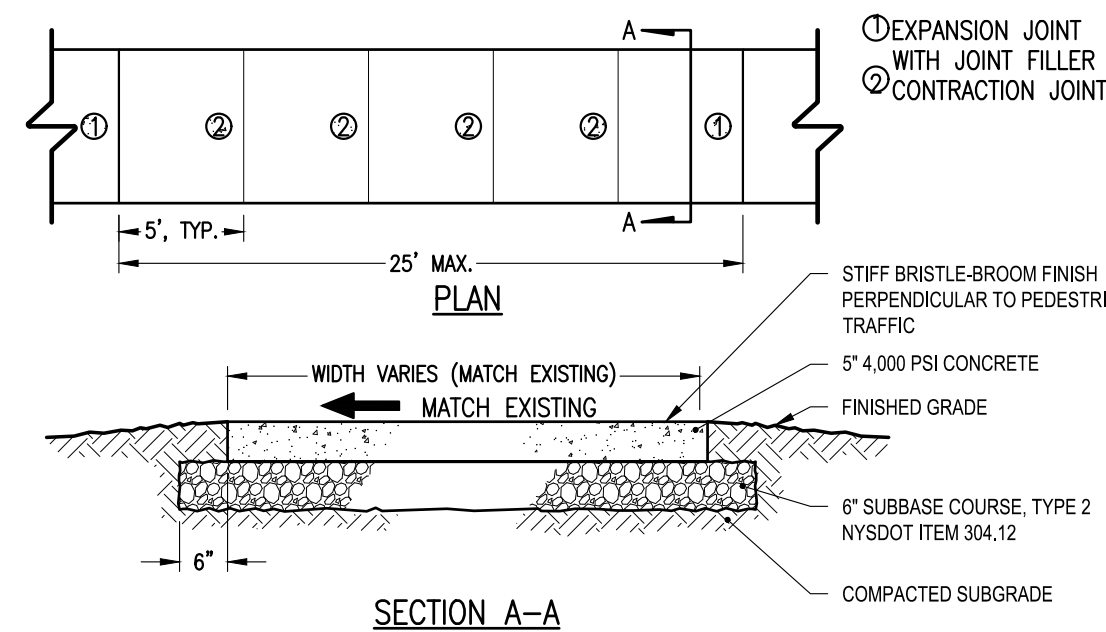
- 1.5" TOP COURSE, 9.5 F2 HMA 70 SERIES NYSOT ITEM 402.097203
- 2" BINDER COURSE, 19 F9 HMA 70 SERIES NYSOT ITEM 402.197903
- 12" SUBBASE COURSE, TYPE 2 NYSOT ITEM 304.12
- MIRAFI 500X GEOTEXTILE FABRIC
- COMPACTED SUBGRADE

NOTES:

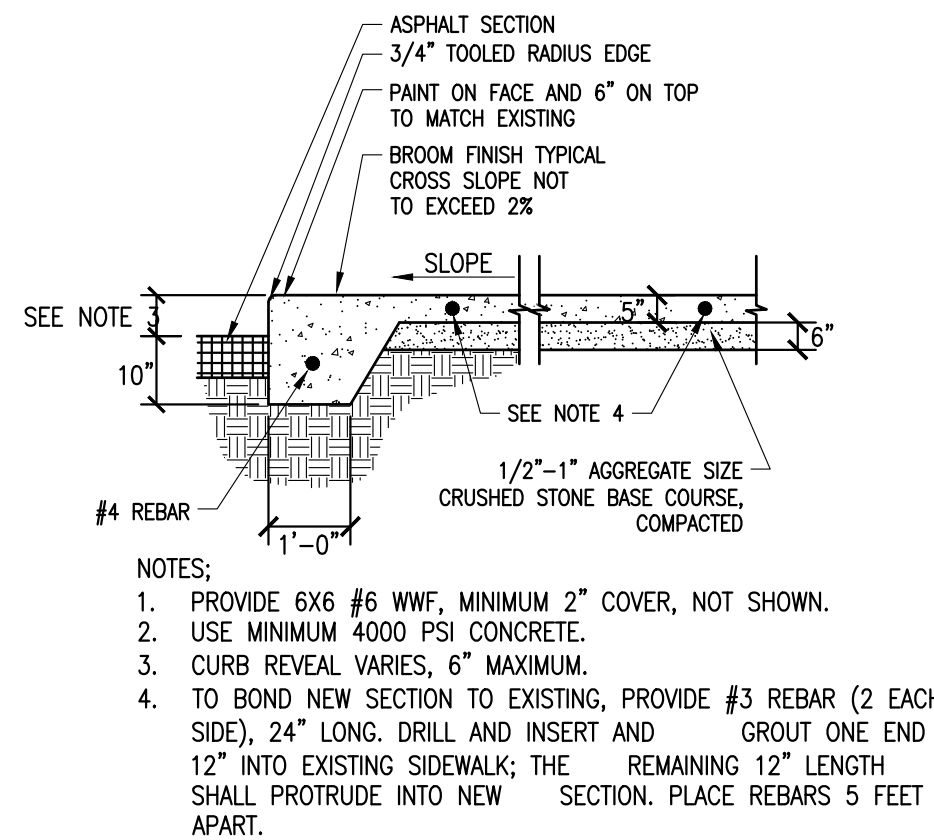
- COMPACT SUBGRADE TO A MODIFIED PROCTOR DENSITY OF 95%
- SUBBASE COURSE SHALL HAVE NO MORE THAN (7%) SEVEN PERCENT BY WEIGHT FINER THAN NO. 200 SIEVE.

**STANDARD DUTY ASPHALT PAVEMENT SECTION**

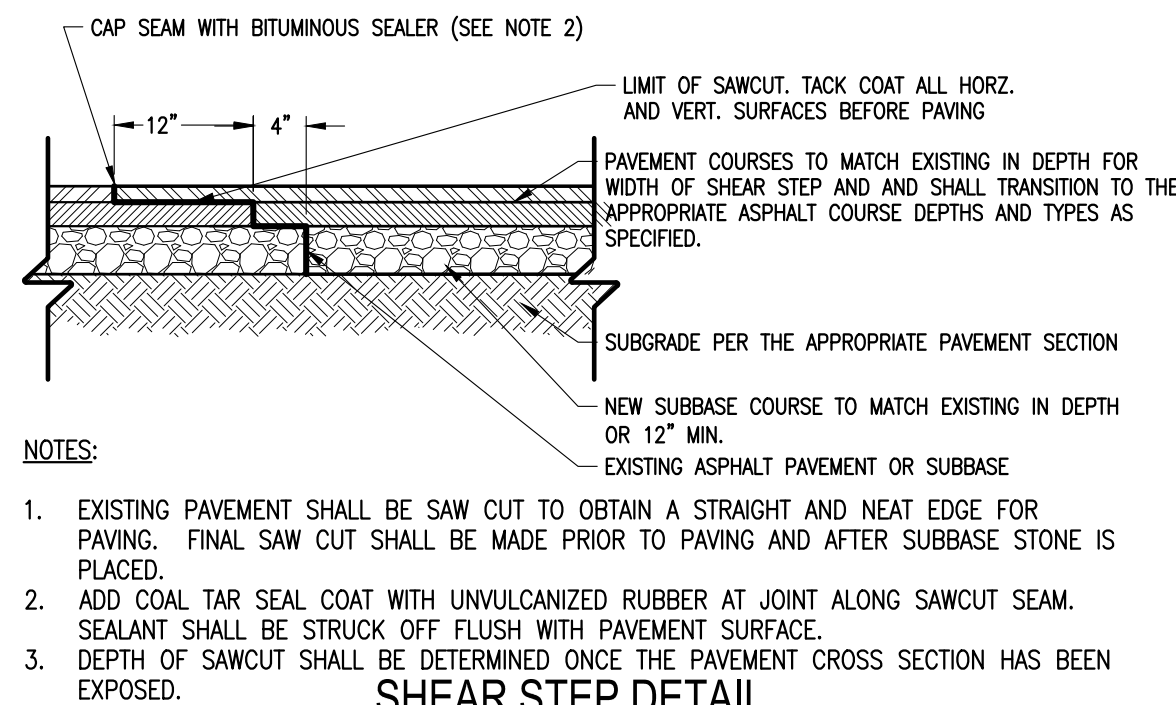
N.T.S.

**CONCRETE SIDEWALK DETAIL**

N.T.S.

**SIDEWALK SECTION WITH CURB**

N.T.S.

**SHEAR STEP DETAIL**

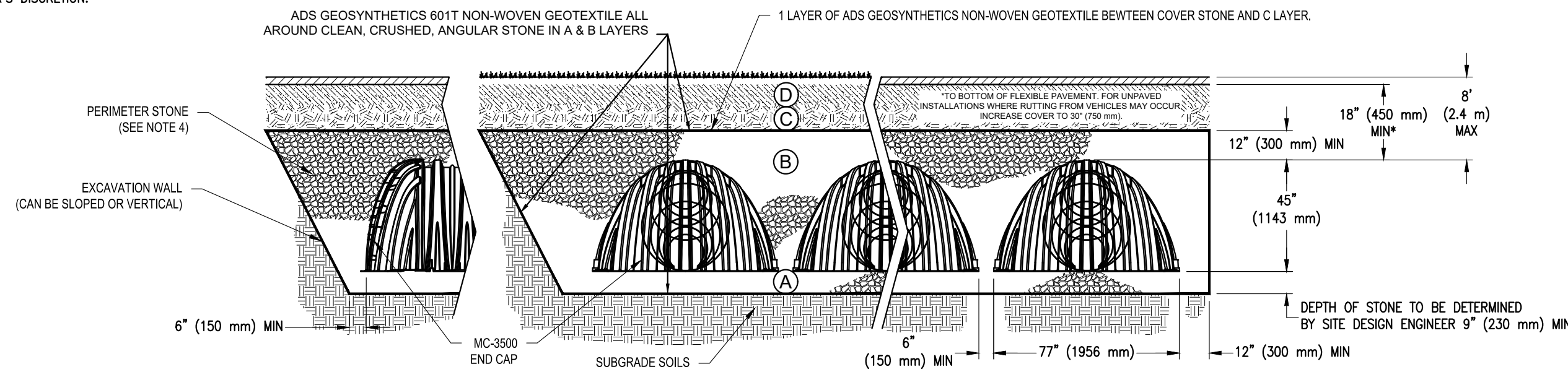
N.T.S.

**ACCEPTABLE FILL MATERIALS: STORMTECH MC-3500 CHAMBER SYSTEMS**

MATERIAL LOCATION	DESCRIPTION	AASHTO MATERIAL CLASSIFICATIONS	COMPACTION / DENSITY REQUIREMENT
D	FINAL FILL: FILL MATERIAL FOR LAYER 'D' STARTS FROM THE TOP OF THE 'C' LAYER TO THE BOTTOM OF FLEXIBLE PAVEMENT OR UNPAVED FINISHED GRADE ABOVE. NOTE THAT PAVEMENT SUBBASE MAY BE PART OF THE 'D' LAYER	N/A	PREPARE PER SITE DESIGN ENGINEER'S PLANS. PAVED INSTALLATIONS MAY HAVE STRINGENT MATERIAL AND PREPARATION REQUIREMENTS.
C	INITIAL FILL: FILL MATERIAL FOR LAYER 'C' STARTS FROM THE TOP OF THE EMBEDMENT STONE (18" LAYER) TO 24" (600 mm) ABOVE THE TOP OF THE CHAMBER. NOTE THAT PAVEMENT SUBBASE MAY BE A PART OF THE 'C' LAYER.	ASHTO M145 <sup>1</sup> A-1, A-2-4, A-3 OR ASHTO M43 <sup>2</sup> 3, 357, 4, 467, 5, 56, 57, 6, 67, 68, 7, 78, 8, 89, 9, 10.	BEGIN COMPACTIONS AFTER 24" (600 mm) OF MATERIAL OVER THE CHAMBERS IS REACHED. COMPACT ADDITIONAL LAYERS IN 12" (300 mm) MAX LIFTS TO A MIN. 95% PROCTOR DENSITY FOR WELL GRADED MATERIAL AND 95% RELATIVE DENSITY FOR PROCESSED AGGREGATE MATERIALS.
B	EMBEDMENT STONE: FILL SURROUNDING THE CHAMBERS FROM THE FOUNDATION STONE ('A' LAYER) TO THE 'C' LAYER ABOVE.	ASHTO M43 <sup>2</sup> 3, 4	NO COMPACTION REQUIRED.
A	FOUNDATION STONE: FILL BELOW CHAMBERS FROM THE SUBGRADE UP TO THE FOOT (BOTTOM) OF THE CHAMBER.	ASHTO M43 <sup>2</sup> 3, 4	PLATE COMPACT OR ROLL TO ACHIEVE A FLAT SURFACE. <sup>2,3</sup>

PLEASE NOTE:

- THE LISTED ASHTO DESIGNATIONS ARE FOR GRADATIONS ONLY. THE STONE MUST ALSO BE CLEAN, CRUSHED, ANGULAR. FOR EXAMPLE, A SPECIFICATION FOR #4 STONE WOULD STATE: "CLEAN, CRUSHED, ANGULAR NO. 4 (ASHTO M43) STONE".
- STORMTECH COMPACTION REQUIREMENTS ARE MET FOR 'A' LOCATION MATERIALS WHEN PLACED AND COMPACTED IN 9" (230 mm) LIFTS USING TWO FULL COVERAGES WITH A VIBRATORY COMPACTOR.
- WHERE INFILTRATION SURFACES MAY BE COMPROMISED BY COMPACTION, FOR STANDARD DESIGN LOAD CONDITIONS, A FLAT SURFACE MAY BE ACHIEVED BY RAKING OR DRAGGING WITHOUT COMPACTION EQUIPMENT. FOR SPECIAL LOAD DESIGNS, CONTACT STORMTECH FOR COMPACTION REQUIREMENTS.
- ONCE LAYER 'C' IS PLACED, ANY SOIL/MATERIAL CAN BE PLACED IN LAYER 'D' UP TO THE FINISHED GRADE. MOST PAVEMENT SUBBASE SOILS CAN BE USED TO REPLACE THE MATERIAL REQUIREMENTS OF LAYER 'C' OR 'D' AT THE SITE DESIGN ENGINEER'S DISCRETION.

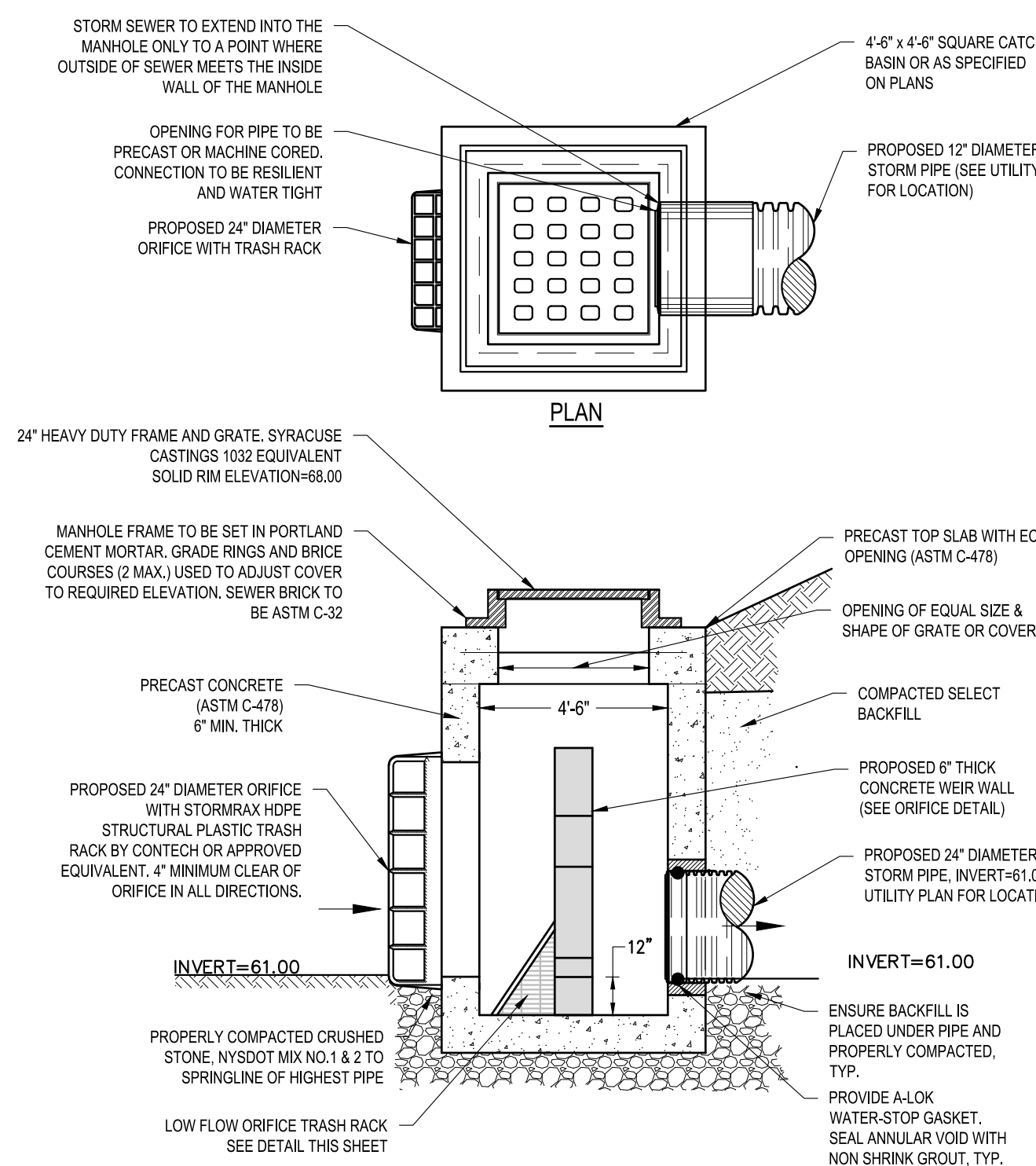


NOTES:

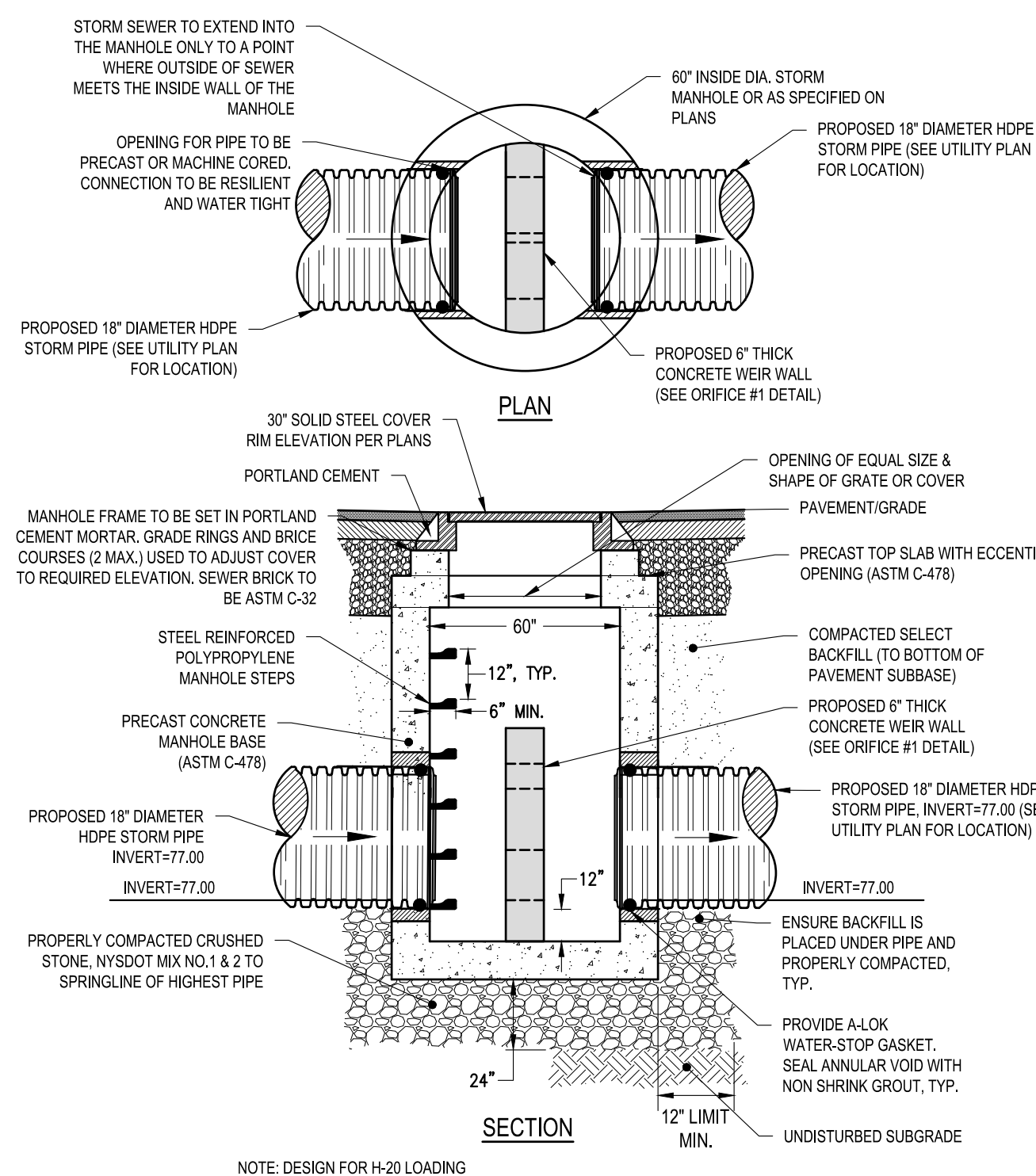
- CHAMBERS SHALL MEET THE REQUIREMENTS OF ASTM F2418-16a, "STANDARD SPECIFICATION FOR POLYPROPYLENE (PP) CORRUGATED WALL STORMWATER COLLECTION CHAMBERS" CHAMBER CLASSIFICATION 45x76 DESIGNATION SS.
- MC-3500 CHAMBERS SHALL BE DESIGNED IN ACCORDANCE WITH ASTM F2787 "STANDARD PRACTICE FOR STRUCTURAL DESIGN OF THERMOPLASTIC CORRUGATED WALL STORMWATER COLLECTION CHAMBERS".
- THE SITE DESIGN ENGINEER IS RESPONSIBLE FOR ASSESSING THE BEARING RESISTANCE (ALLOWABLE BEARING CAPACITY) OF THE SUBGRADE SOILS AND THE DEPTH OF FOUNDATION STONE WITH CONSIDERATION FOR THE RANGE OF EXPECTED SOIL MOISTURE CONDITIONS.
- PERIMETER STONE MUST BE EXTENDED HORIZONTALLY TO THE EXCAVATION WALL FOR BOTH VERTICAL AND SLOPED EXCAVATION WALLS.
- REQUIREMENTS FOR HANDLING AND INSTALLATION
  - TO MAINTAIN THE WIDTH OF CHAMBERS DURING SHIPPING AND HANDLING, CHAMBERS SHALL HAVE INTEGRAL, INTERLOCKING STACKING LUGS.
  - TO ENSURE A SECURE JOINT DURING INSTALLATION AND BACKFILL, THE HEIGHT OF THE CHAMBER JOINT SHALL NOT BE LESS THAN 3".
  - TO ENSURE THE INTEGRITY OF THE ARCH SHAPE DURING INSTALLATION, a) THE ARCH STIFFNESS CONSTANT AS DEFINED IN SECTION 6.2.8 OF ASTM F2418 SHALL BE GREATER THAN OR EQUAL TO 500 LBS/M-IN. AND b) TO RESIST CHAMBER DEFORMATION DURING INSTALLATION AT ELEVATED TEMPERATURES (ABOVE 73° F / 23° C), CHAMBERS SHALL BE PRODUCED FROM REFLECTIVE GOLD OR YELLOW COLORS.

**ADS STORMTECH MC-3500 D +CAP DETAIL**

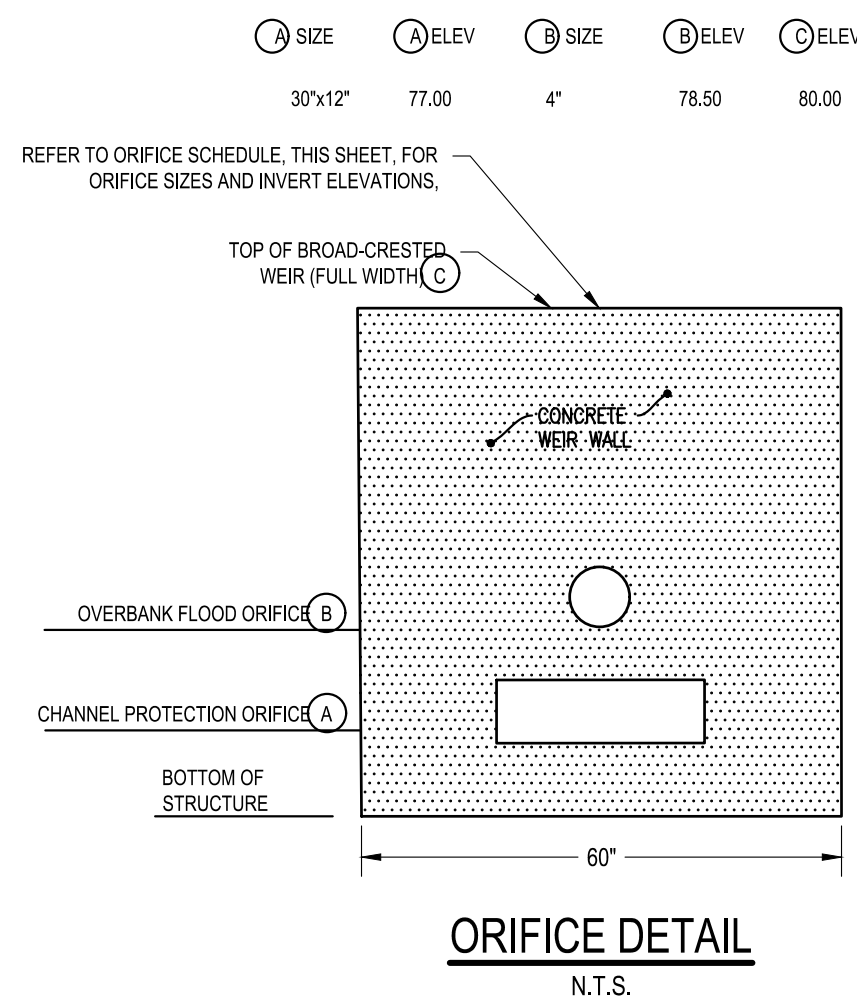
N.T.S.

**OUTLET CONTROL STRUCTURE DETAIL (EXISTING POND EXTENSION)**

N.T.S.

**UNDERGROUND STORAGE OUTLET STRUCTURE DETAIL**

N.T.S.



2 Winners Circle, Suite 102  
Albany, NY 12205  
www.bergmannpc.com  
office: 518.862.0325

**POWER FLEX**

805 THIRD AVENUE  
NEW YORK, NY 10022

**500 MAMARONECK AVE SOLAR PROJECT**

500 MAMARONECK AVENUE  
HARRISON, NY 10528

Date Revised	Description
10/12/2021	UPDATED PER TOWN COMMENTS
12/27/2021	UPDATED PER TOWN COMMENTS
05/13/2022	UPDATED STORM DESIGN
06/03/2022	UPDATED STORM DESIGN
09/08/2022	UPDATED DETAIL PER NYSDEC COMMENTS

**ISSUED FOR PERMIT**

Copyright © Bergmann Associates, Architects, Engineers, Landscape Architects & Surveyors, D.P.C.

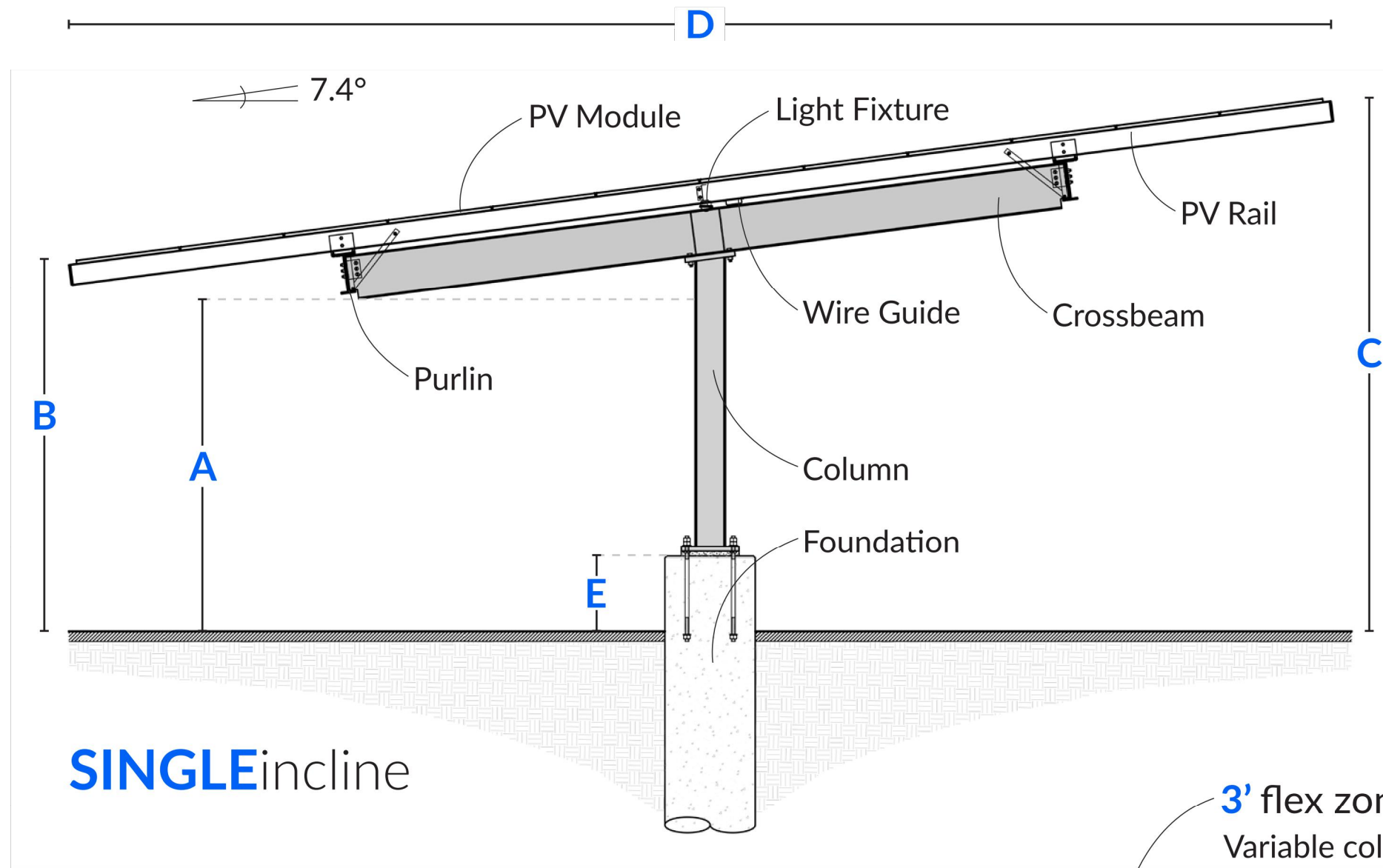
Project Manager	Discipline Lead
<b>ECR</b>	<b>ECR</b>
Designer	Reviewer
<b>WD</b>	<b>WD</b>
Date Issued	Project Number
<b>08/20/2021</b>	<b>14064.10</b>
Sheet Name	

**DETAILS II**

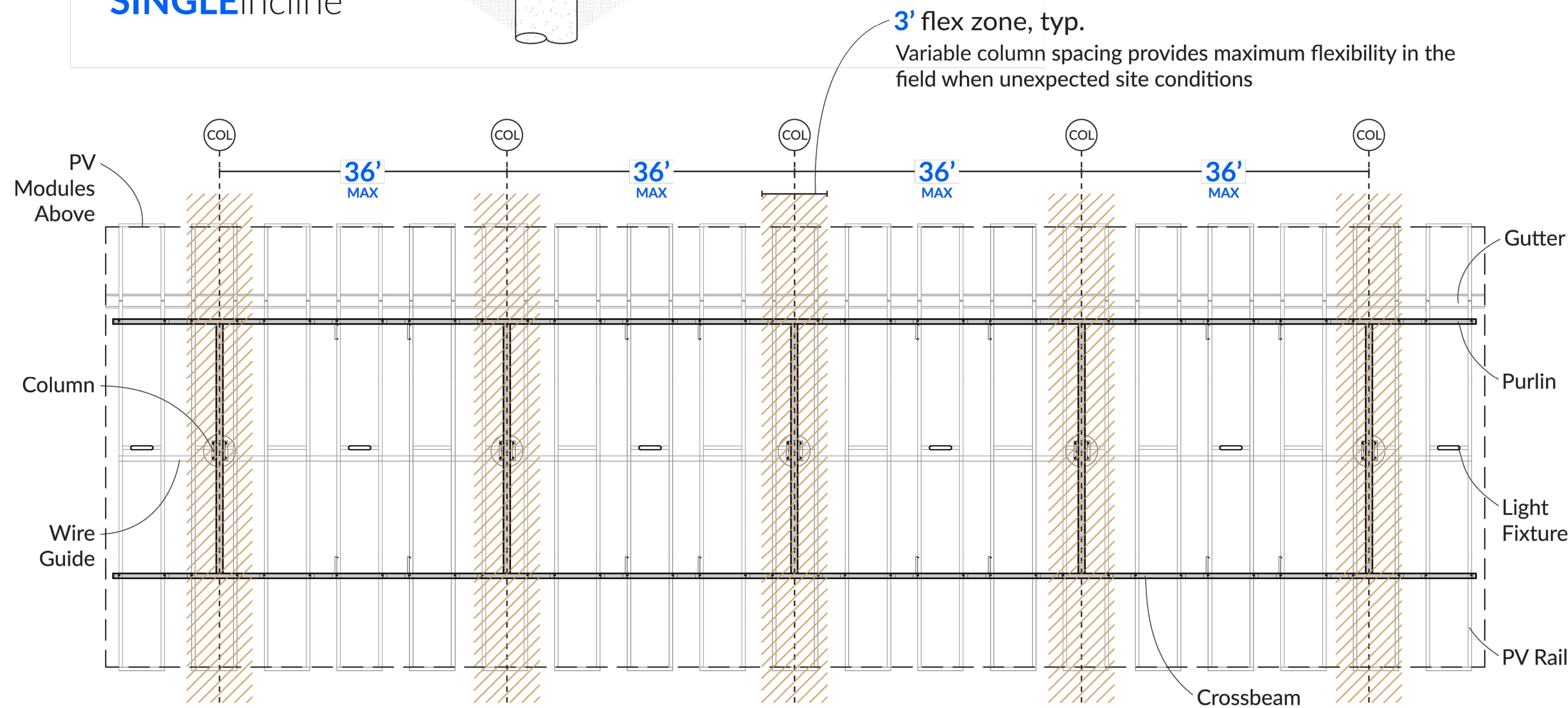
Drawing Number

**C009**



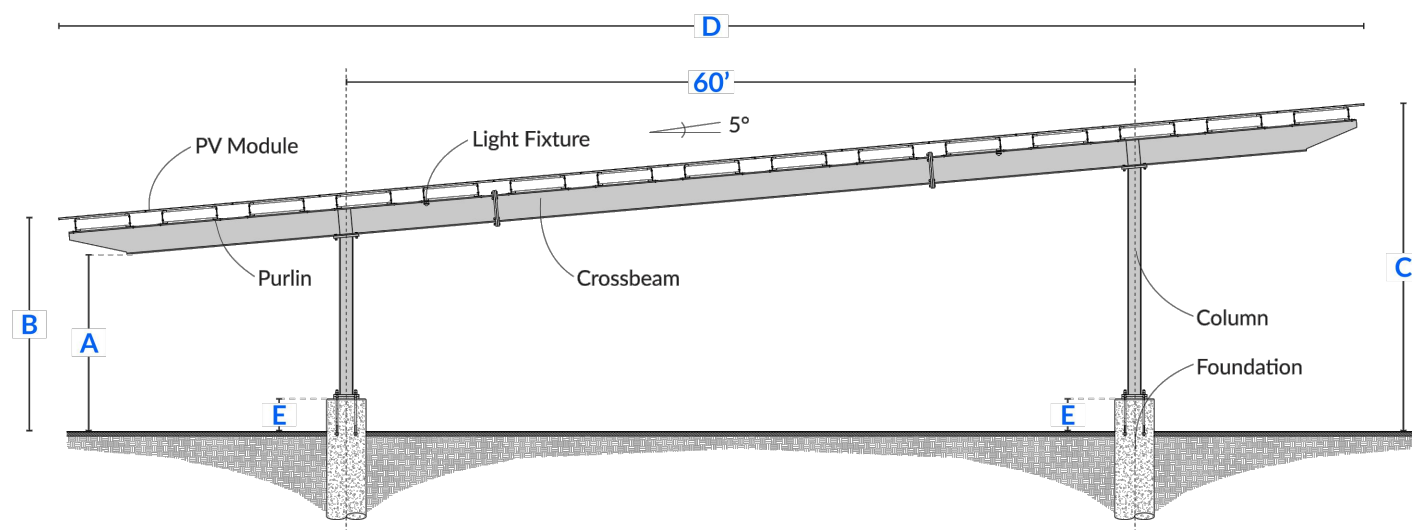


**SINGLE**incline



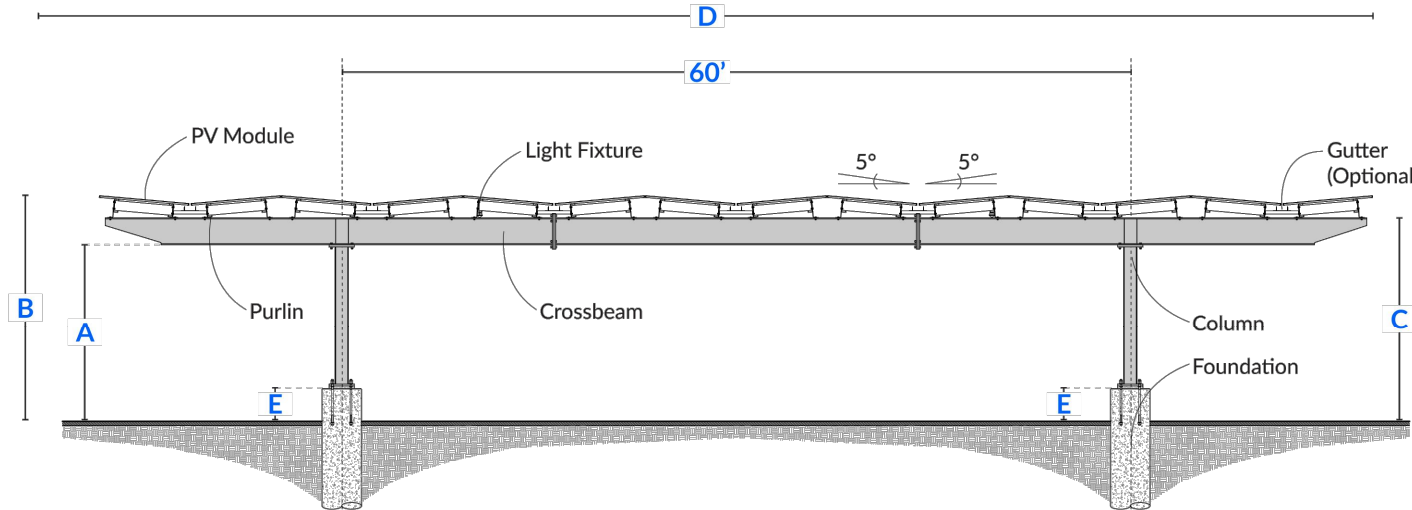
**PLAN** - flex column spacing

**SOLAR CANOPY DETAIL**  
N.T.S.



STANDARD CLEARANCES		
A	11'-0" MIN CLEARANCE	13'-6" MIN CLEARANCE
B	13'-9"	16'-3"
C	22'-6"	24'-11"
D	99'-5"	
E	2'-6"	

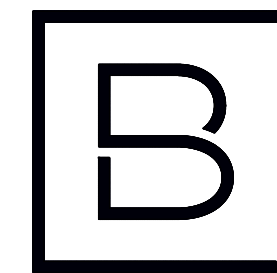
\*MIN. PIER HEIGHT: 2'-6", MAX PIER HEIGHT: 4'-0"



STANDARD CLEARANCES		
A	11'-0" MIN CLEARANCE	13'-6" MIN CLEARANCE
B	14'-9"	17'-3"
C	13'-0"	15'-6"
D	96'-10"	
E	2'-6"	

\*MIN. PIER HEIGHT: 2'-6", MAX PIER HEIGHT: 4'-0"

**LONG SPAN SOLAR CANOPY DETAIL**  
N.T.S.



**BERGMANN**  
ARCHITECTS ENGINEERS PLANNERS

2 Winners Circle, Suite 102  
Albany, NY 12205  
www.bergmannpc.com  
office: 518.862.0325

## POWER FLEX

805 THIRD AVENUE  
NEW YORK, NY 10022

## 500 MAMARONECK AVE SOLAR PROJECT

500 MAMARONECK AVENUE  
HARRISON, NY 10528

Date Revised	Description
10/12/2021	UPDATED PER TOWN COMMENTS
12/27/2021	UPDATED PER TOWN COMMENTS
05/13/2022	UPDATED STORM DESIGN
06/03/2022	UPDATED STORM DESIGN
09/08/2022	UPDATED DETAIL PER NYSDEC COMMENTS

## ISSUED FOR PERMIT



Copyright © Bergmann Associates, Architects, Engineers,  
Landscape Architects & Surveyors, D.P.C.

Project Manager	Discipline Lead
<b>ECR</b>	<b>ECR</b>
Designer	Reviewer
<b>WD</b>	<b>WD</b>
Date Issued	Project Number
<b>08/20/2021</b>	<b>14064.10</b>

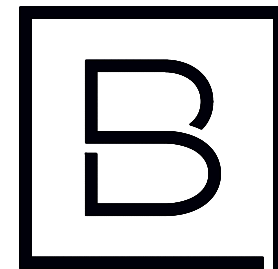
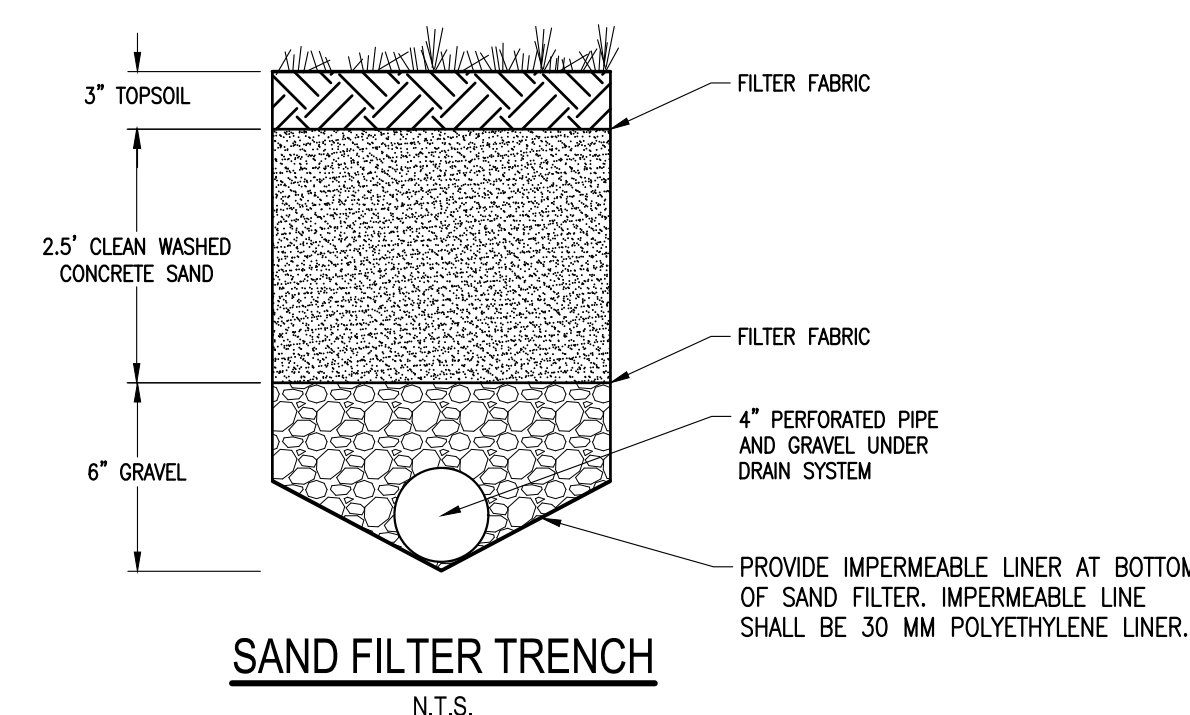
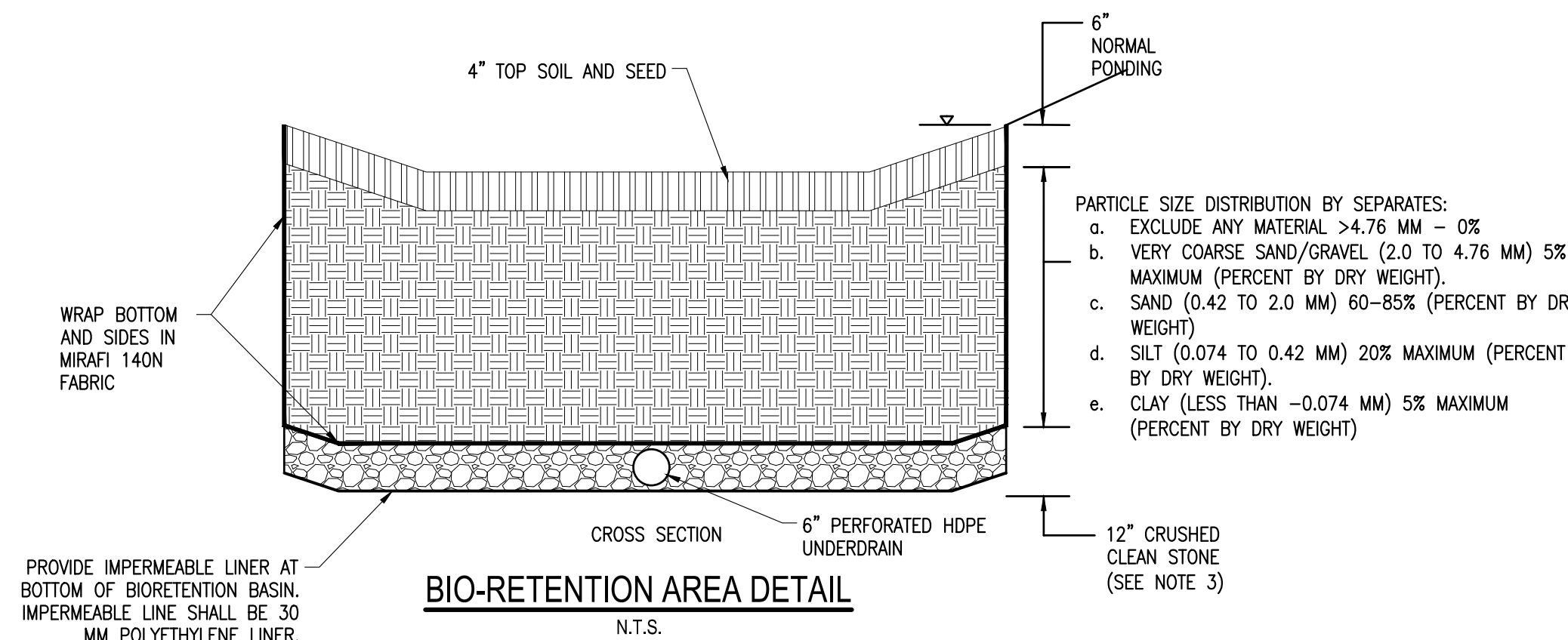
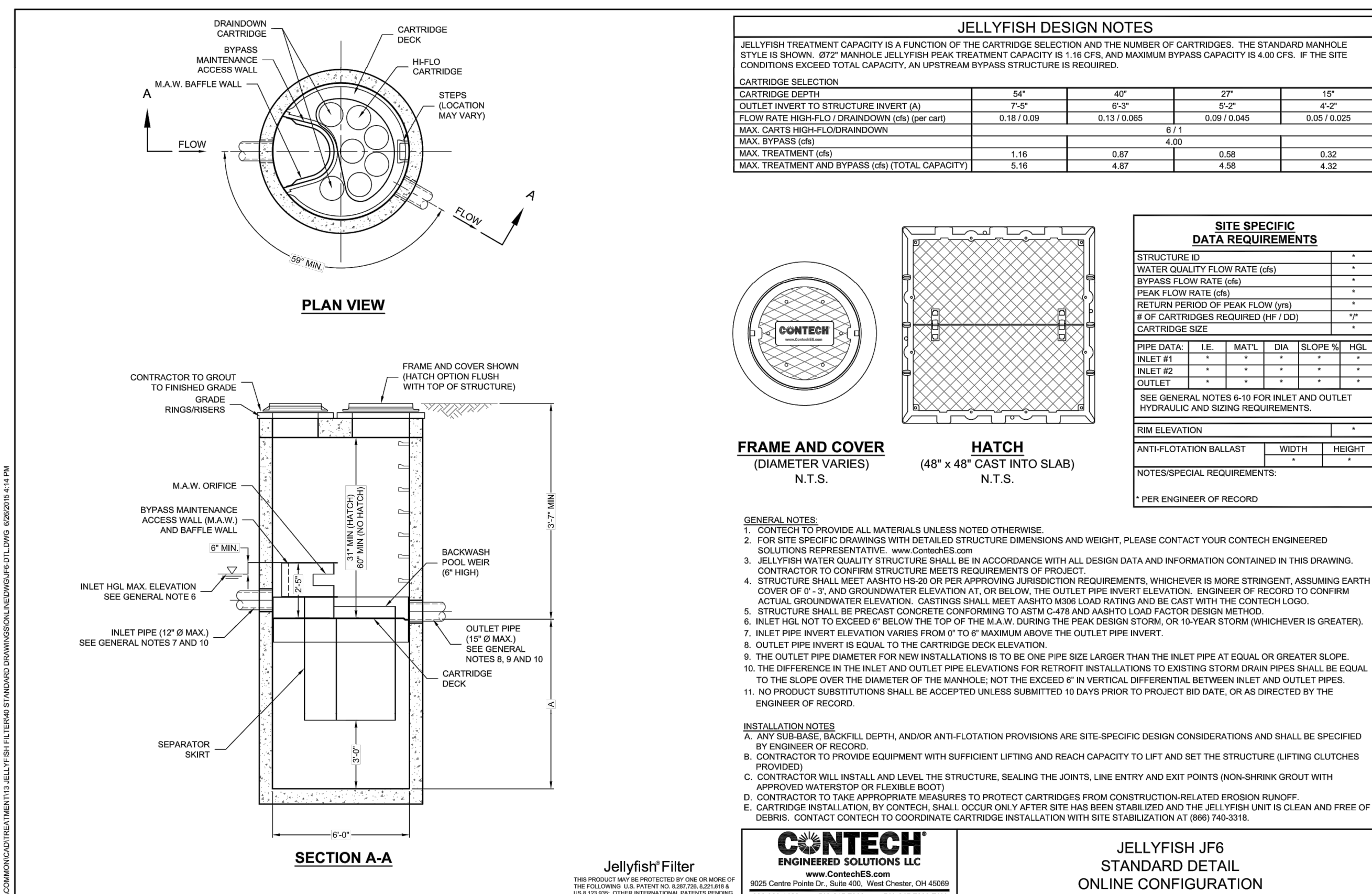
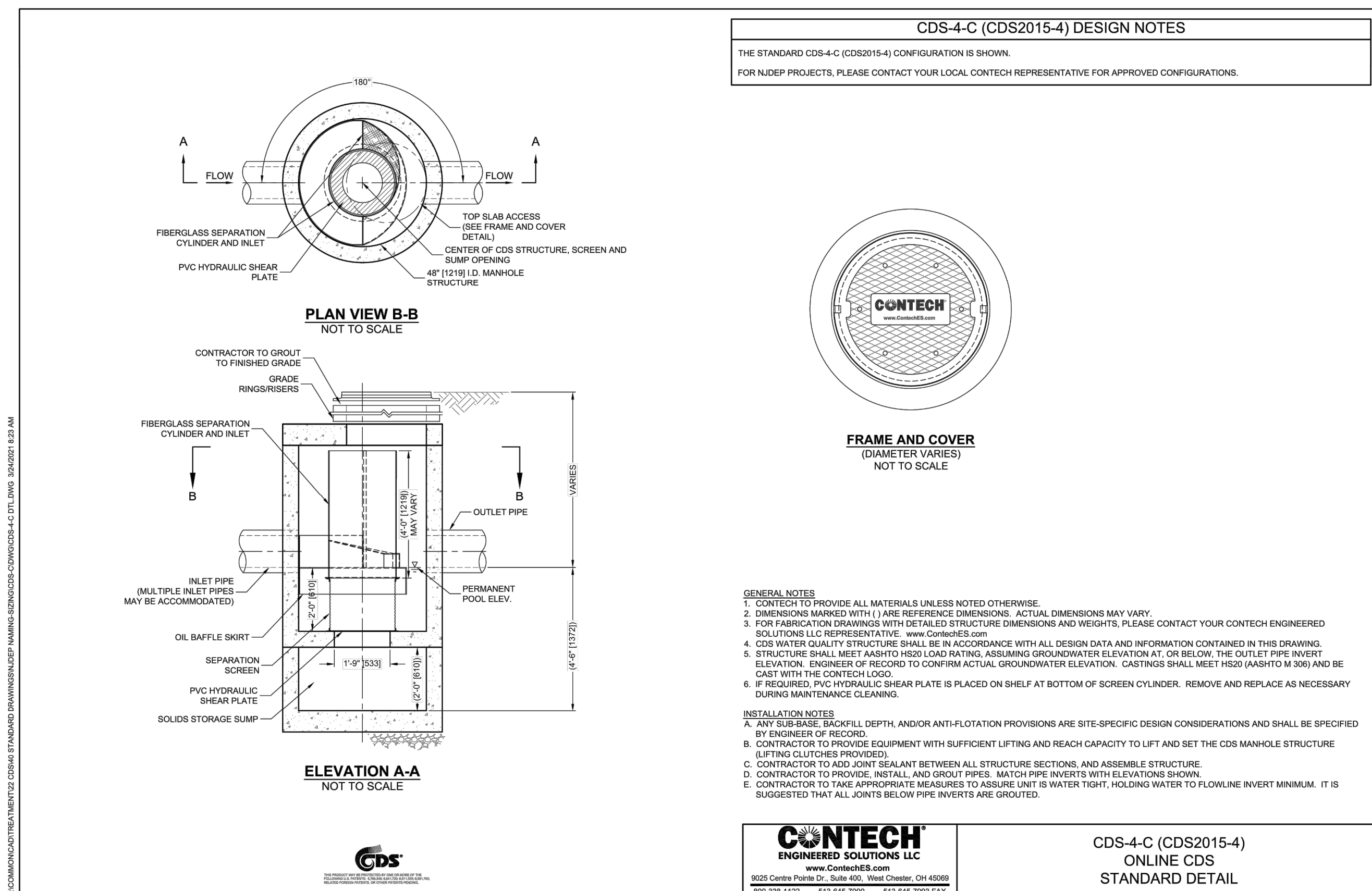
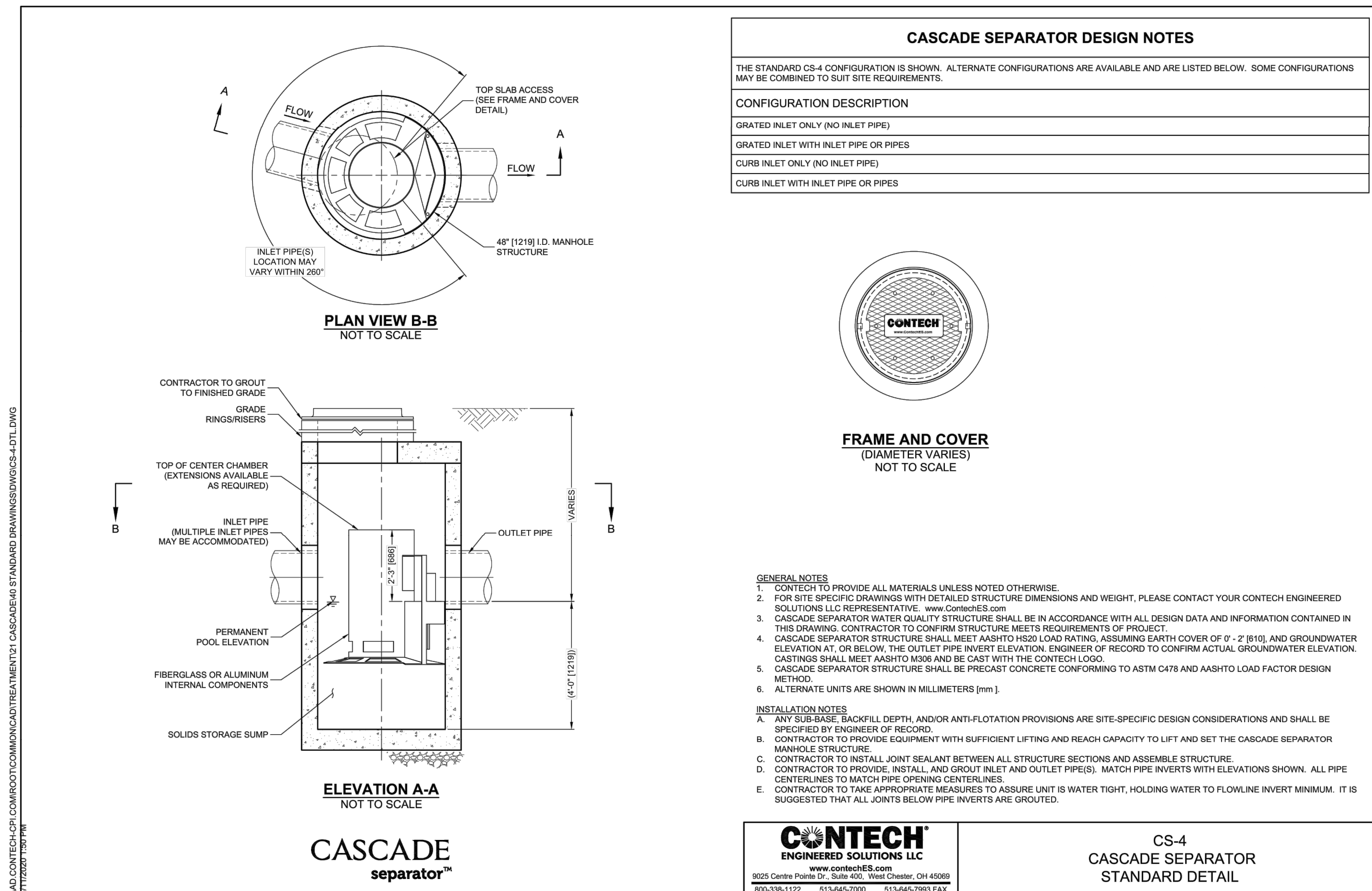
Sheet Name

## DETAILS III

Drawing Number

**C010**





**BERGMANN**  
ARCHITECTS ENGINEERS PLANNERS

2 Winners Circle, Suite 102  
Albany, NY 12205  
[www.bergmannpc.com](http://www.bergmannpc.com)

office: 518.862.0325

## POWER FLEX

805 THIRD AVENUE  
NEW YORK, NY 10022

## 500 MAMARONECK AVE SOLAR PROJECT

500 MAMARONECK AVENUE  
HARRISON, NY 10528

Date Revised	Description
10/12/2021	UPDATED PER TOWN COMMENTS
12/27/2021	UPDATED PER TOWN COMMENTS
05/13/2022	UPDATED STORM DESIGN
06/03/2022	UPDATED STORM DESIGN
09/08/2022	UPDATED DETAIL PER NYSDEC COMMENTS

## ISSUED FOR PERMIT



Copyright © Bergmann Associates, Architects, Engineers, Landscape Architects & Surveyors, D.P.C

Project Manager	Discipline Lead
<b>ECR</b>	<b>ECR</b>
Designer	Reviewer
<b>WD</b>	<b>WD</b>
Date Issued	Project Number
<b>08/20/2021</b>	<b>14064.10</b>

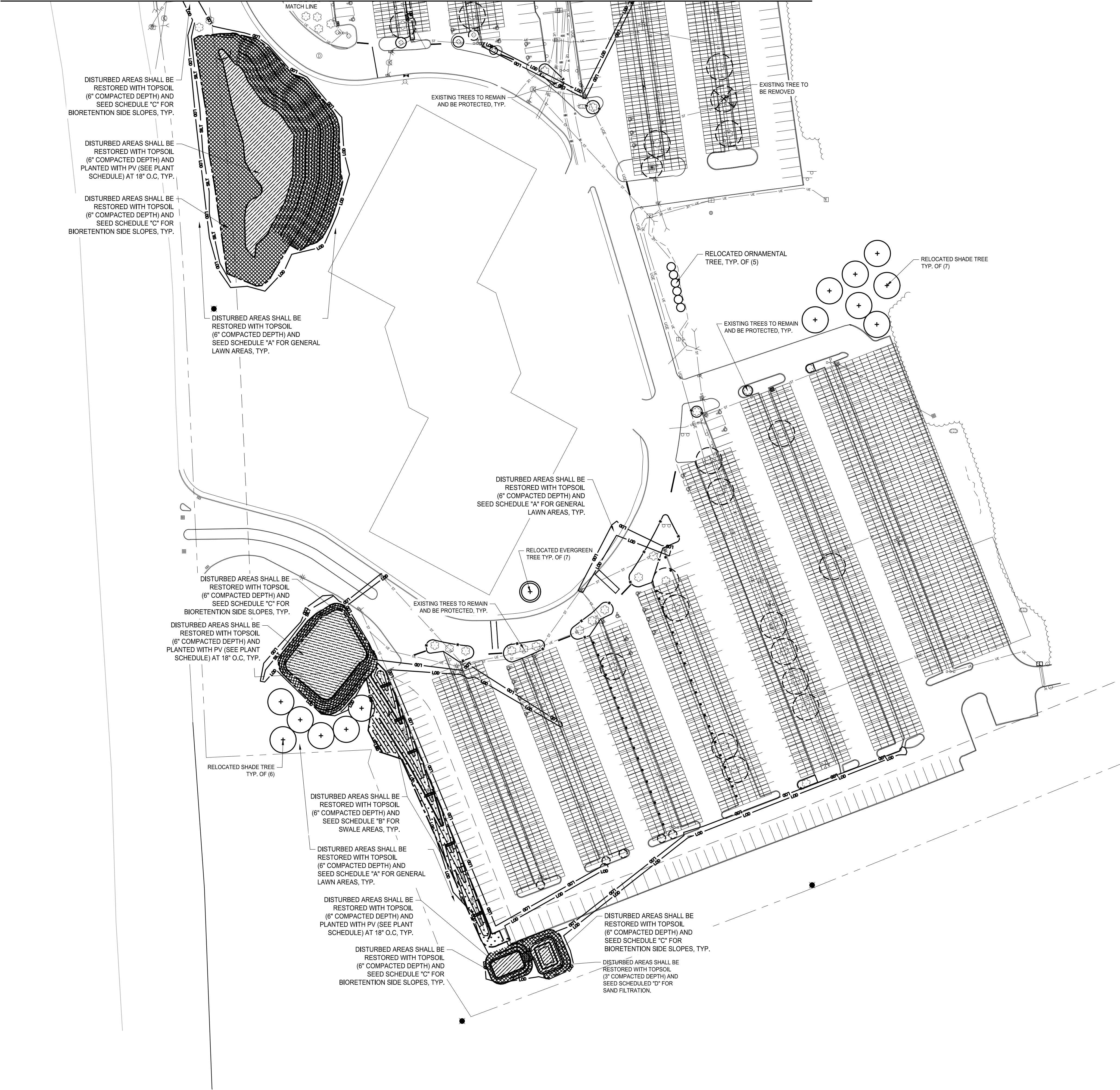
Sheet Name

## DETAILS IV

Drawing Number

**C011**




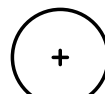



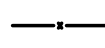


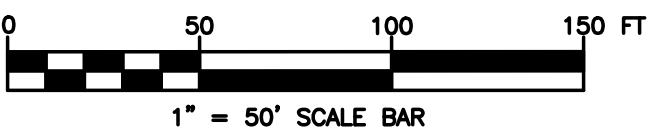


LANDSCAPE NOTES:

- ALL PLANTS MUST BE HEALTHY, VIGOROUS, AND FREE OF PESTS AND DISEASE.
- STANDARDS SET FORTH IN "AMERICAN STANDARD FOR NURSERY STOCK", ANSI, Z60.1 (LATEST EDITION), REPRESENT GUIDELINE SPECIFICATIONS ONLY AND SHALL CONSTITUTE MINIMUM QUALITY REQUIREMENTS FOR PLANT MATERIAL.
- ALL PLANTS MUST BE HARDY UNDER CLIMATE CONDITIONS THAT EXIST AT THE PROJECT SITE AND GROWN AT A NURSERY AT THE SAME HARDINESS ZONE AS THE PROJECT LOCATION.
- NO SUBSTITUTIONS SHALL BE PERMITTED WITHOUT PRIOR WRITTEN APPROVAL OF OWNER'S REPRESENTATIVE.
- ALL TREES MUST BE STRAIGHT TRUNKED, INJURY FREE, AND FULL HEADED.
- THE CONTRACTOR IS RESPONSIBLE FOR VERIFYING ALL QUANTITIES SHOWN ON THESE PLANS BEFORE PRICING THE WORK.
- ANY DISCREPANCY WITH QUANTITIES, LOCATIONS AND / OR FIELD CONDITIONS SHALL BE BROUGHT TO THE ATTENTION OF THE OWNER'S REPRESENTATIVE OR LANDSCAPE ARCHITECT PRIOR TO INSTALLATION.
- MULCH ALL ISLANDS AND PLANTINGS IN LAWN AREAS WITH DOUBLE GROUND HARDWOOD BARK MULCH. MULCH SHALL BE AGED A MIN. OF ONE (1) YEAR FOR PARTIAL DECOMPOSITION. IT SHALL BE SCREENED TO EXCLUDE PARTICLES LARGER THAN ONE (1) INCH IN DIAMETER. MATERIAL SHALL BE COMPOSED OF BARK AND HAVE A LOW WOOD CONTENT WITH NO HIDDEN WOODS FROM CONSTRUCTION DEBRIS, PALLETS OR PRESSURE TREATED LUMBER AND BE FREE OF WEEDS, SEEDS, AND GREEN LEAF MATTER. IT SHALL BE NATURALLY DARK BROWN IN COLOR. NO DYED MULCH WILL BE ACCEPTED. MULCH DEPTH SHALL BE THREE (3) INCHES UNLESS OTHERWISE DIRECTED.
- ANY PLANT WHICH DIES, TURNS BROWN, OR DEFLOLIATES (PRIOR TO FINAL ACCEPTANCE OF THE WORK) SHALL BE PROMPTLY REMOVED FROM THE SITE AND REPLACED WITH MATERIAL OF THE SAME SPECIES, QUANTITY AND SIZE MEETING ALL PLANT LIST SPECIFICATIONS.
- THE CONTRACTOR IS RESPONSIBLE FOR FULLY MAINTAINING ALL PLANT MATERIALS (INCLUDING, BUT NOT LIMITED TO: WATERING, SPRAYING, MULCHING, FERTILIZING, AND REMOVAL OF STAKES AND GUYS) AND LAWN AREAS UNTIL FINAL ACCEPTANCE BY THE OWNER.
- THE CONTRACTOR SHALL COMPLETELY GUARANTEE ALL PLANT MATERIAL FOR A PERIOD OF ONE (1) YEAR, BEGINNING ON THE DATE OF FINAL ACCEPTANCE. THE CONTRACTOR SHALL PROMPTLY MAKE ALL REPLACEMENTS BEFORE THE END OF THE GUARANTEE PERIOD.
- ALL AREAS DISTURBED BY UTILITY INSTALLATION AND SITE GRADING ACTIVITY SHALL RECEIVE APPROVED TOPSOIL (TO A COMPACTED DEPTH OF FOUR (4) INCHES, UNLESS OTHERWISE SPECIFIED BY THE GOVERNING MUNICIPALITY), BE FINE GRADED, SEED, MULCHED AND WATERED UNTIL A HEALTHY STAND OF GRASS IS OBTAINED.
- ALL TOPSOIL SHALL BE SCREENED LOAM SURFACE SOIL, FREE OF STONES AND SHALL HAVE THE FOLLOWING MINIMUM REQUIREMENTS:
  - AN ORGANIC CONTENT OF 6-12%
  - SOIL ACIDITY RANGE OF PH 6.0 TO PH 6.8
  - SOLUBLE SALTS OF 1000 PPM OR LESS
  - MAXIMUM CLAY CONTENT OF 15-20%
- THE CONTRACTOR IS RESPONSIBLE FOR PROVIDING, AT THEIR EXPENSE, A CERTIFIED SOIL TEST ANALYSIS OF ON SITE AND / OR IMPORTED TOPSOIL. TOPSOIL ANALYSIS TO INCLUDE THE FOLLOWING DATA:
  - PH FACTOR
  - MECHANICAL ANALYSIS, INCLUDING SIEVE ANALYSIS PROVIDING SEPARATE SAND, SILT AND CLAY PERCENTAGES.
  - PERCENTAGE OF ORGANIC CONTENT BY WEIGHT
  - NUTRIENT LEVELS INCLUDING NITROGEN, PHOSPHOROUS AND POTASSIUM.
- SHOULD TESTS AND ANALYSIS INDICATE THAT SOIL PROPOSED FOR USE IS DEFICIENT IN ANY OF THE ABOVE REQUIREMENTS, A SYSTEM OF AMELIORATING MAY BE PROPOSED FOR APPROVAL. ANY SYSTEM PROPOSED SHALL PROVIDE FOR AN ACIDITY RANGE OF PH 6.0 TO 6.8 INCLUSIVE.
- COMPOST SHALL MEET THE FOLLOWING MINIMUM REQUIREMENTS:
  - ORGANIC CONTENT OF 35-60% (DRY WEIGHT BASIS)
  - LOOSE AND FRIABLE WITH MOISTURE CONTENT OF 35-60% (WET WEIGHT BASIS)
  - PARTICLE SIZE SHALL BE <1/2 INCH (100% PASSING)
  - SOLUBLE SALTS CONCENTRATION SHALL BE <4.0 MMHOS/CM (DS/M), MAXIMUMPH RANGE OF 6.0-8.5
- PLANTING MIX FOR PLANT PITS SHALL BE COMPOSED OF (2) PARTS APPROVED IMPORTED OR ON-SITE SCREENED TOPSOIL AND (1) PART COMPOST.
- LOCATIONS OF EXISTING BURIED UTILITIES SHOWN ON THE PLAN ARE BASED UPON BEST AVAILABLE INFORMATION AND ARE TO BE CONSIDERED APPROXIMATE. IT SHALL BE THE RESPONSIBILITY OF THE CONTRACTOR TO VERIFY THE LOCATIONS OF ALL UNDERGROUND UTILITY LINES ADJACENT TO THE WORK AREA. THE CONTRACTOR SHALL BE RESPONSIBLE FOR REPAIRING ANY AND ALL DAMAGE TO UTILITIES, STRUCTURES AND SITE APPURTENANCES, ETC., WHICH OCCURS AS A RESULT OF THE LANDSCAPE INSTALLATION.
- THE CONTRACTOR IS RESPONSIBLE FOR INSTALLING ALL PLANT MATERIAL PER DETAILS. ANY DEVIATIONS FROM THE DETAIL MUST BE APPROVED BY THE OWNER'S REPRESENTATIVE OR LANDSCAPE ARCHITECT PRIOR TO INSTALLATION.
- SEE SHEET C131 FOR LANDSCAPE DETAILS.
- UPON FINAL ACCEPTANCE OF THE LANDSCAPE INSTALLATION, THE OWNER WILL ASSUME MAINTENANCE OF THE LANDSCAPED AREAS.
- EXISTING TREES TO REMAIN SHALL BE PROTECTED BY INSTALLING A TEMPORARY FENCE AT THE OUTER LIMITS OF THE TREE CANOPY.

LANDSCAPE LEGEND

-  EXISTING SHADE TREE TO BE RELOCATED
-  RELOCATED ORNAMENTAL TREE
-  EXISTING ORNAMENTAL TREE TO BE RELOCATED
-  RELOCATED SHADE TREE
-  EXISTING EVERGREEN TREE TO BE RELOCATED
-  RELOCATED EVERGREEN TREE
-  EXISTING TREE TO BE REMOVED
-  VEGETATION PROTECTION BARRIER



2 Winners Circle, Suite 102  
Albany, NY 12205  
www.bergmannpc.com  
office: 518.862.0325

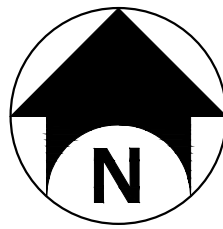
POWER FLEX

805 THIRD AVENUE  
NEW YORK, NY 10022

500 MAMARONECK  
AVE SOLAR PROJECT

500 MAMARONECK AVENUE  
HARRISON, NY 10528

Date Revised	Description
10/12/2021	UPDATED PER TOWN COMMENTS
12/27/2021	UPDATED PER TOWN COMMENTS
05/13/2022	UPDATED STORM DESIGN
06/03/2022	UPDATED STORM DESIGN
09/08/2022	UPDATED DETAIL PER NYSEDC COMMENTS



ISSUED FOR PERMIT



Copyright © Bergmann Associates, Architects, Engineers,  
Landscape Architects & Surveyors, D.P.C

Project Manager	Discipline Lead
<b>ECR</b>	<b>ECR</b>
Designer	Reviewer
<b>MS</b>	<b>ES</b>
Date Issued	Project Number
<b>08/20/2021</b>	<b>14064.10</b>

Sheet Name

LANDSCAPE PLAN

Drawing Number

C130



**SEED SCHEDULE 'A' (GENERAL LAWN AREAS)**

5 lbs./1,000 s.f.

30% CREEPING RED FESCUE (MIN. 3 VARIETIES)  
50% PERENNIAL RYEGRASS (MIN. 3 VARIETIES)  
20% KENTUCKY BLUEGRASS (MIN. 3 VARIETIES)**SEED SCHEDULE 'B' (SWALE AREAS)**

1 lb./1,000 s.f.

60% PERENNIAL RYEGRASS  
25% INOCULATED BIRD'SFOOT TREFOIL  
15% REDTOP\* USE ONLY SEED WITH GERMINATION  
RATE OF 70% OR BETTER THAT HAS  
BEEN TESTED WITHIN THE PAST 4 OR 5  
MONTHS.\*\*PROVIDE TEMPORARY SEEDING OF  
ANNUAL RYEGRASS (LOLIUM MULTIFLORUM)  
WITHIN SEEDING LIMITS AT RATE OF 50 lbs./acre.**SEED SCHEDULE 'C' (STORMWATER BASIN - SIDE SLOPES)**

SEEDING LIMITS: AS SHOWN ON PLAN

NATIVE UPLAND WILDLIFE FORAGE AND COVER MEADOW MIX (ERNMX-123)  
AS PROVIDED BY ERNST CONSERVATION SEEDS, (800) 873-3321 WWW.ERNSTSEED.COM  
SEEDING RATE: 20 LBS. PER ACRE

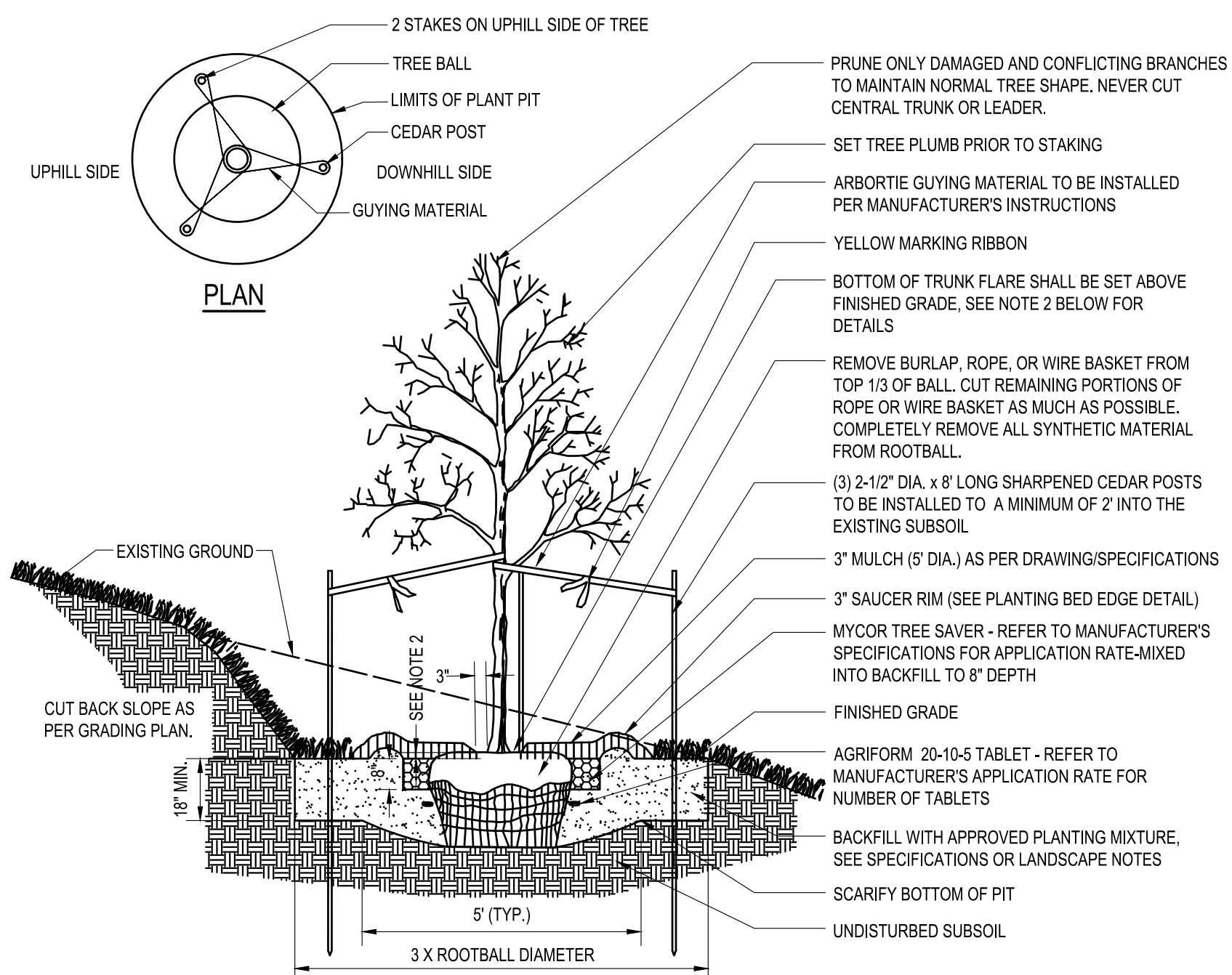
PERCENT BY NO. OF SEEDS	SCIENTIFIC NAME	COMMON NAME
34.9%	ANDROPOGON GERARDII 'NAGARA'	BIG BLUESTEM 'NAGARA'
27%	PANICUM VIRGATUM 'SHAWNEE'	SWITCHGRASS 'SHAWNEE'
21%	ELYMUS VIRGICULUS MADISONIAN ECOTYPE	VIRGINIA WILDRYE MADISONIAN ECOTYPE
9%	SORGHASTRUM NUTANS SOUTHLOW-MI ECOTYPE	INDIANGRASS 'SOUTHLOW-MI ECOTYPE
3%	RUDEBECKIA HIRTA	BLACKEYED SUSAN
2%	CHAMAECRISTA FASCICULATA, PA ECOTYPE	PARTRIDGE PEA, PA ECOTYPE
1.5%	HELIOPSIS HELIANTHOIDES, PA ECOTYPE	OXEYE SUNFLOWER, PA ECOTYPE
1%	COREOPSIS TINCTORIA	PLAINS COREOPSIS
0.4%	DESMODIUM CANADENSE, PA ECOTYPE	SHOWY TICKREFOIL, PA ECOTYPE
0.1%	ASCLEPIAS SYRIACA	COMMON MILKWEED
0.1%	MONARDA FISTULOSA, FORT INDIANTOWN GAP-PA ECOTYPE	WILD BERGAMOT, INDIANTOWN GAP-PA ECOTYPE

- PROVIDE COVER CROP OF EITHER GRAIN OATS (JAN. 1 - JULY 31) OR GRAIN RYE (AUG. 1 - DEC. 31)  
WITHIN SEEDING LIMITS AT RATE OF 30 LBS. PER ACRE**SEED SCHEDULE 'D' (SAND FILTRATION)**

5 lbs./1,000 s.f.

50% TURF TYPE TALL FESCUE (MIN. 3 VARIETIES)  
50% KENTUCKY BLUEGRASS (MIN. 3 VARIETIES)**PLANT LIST**

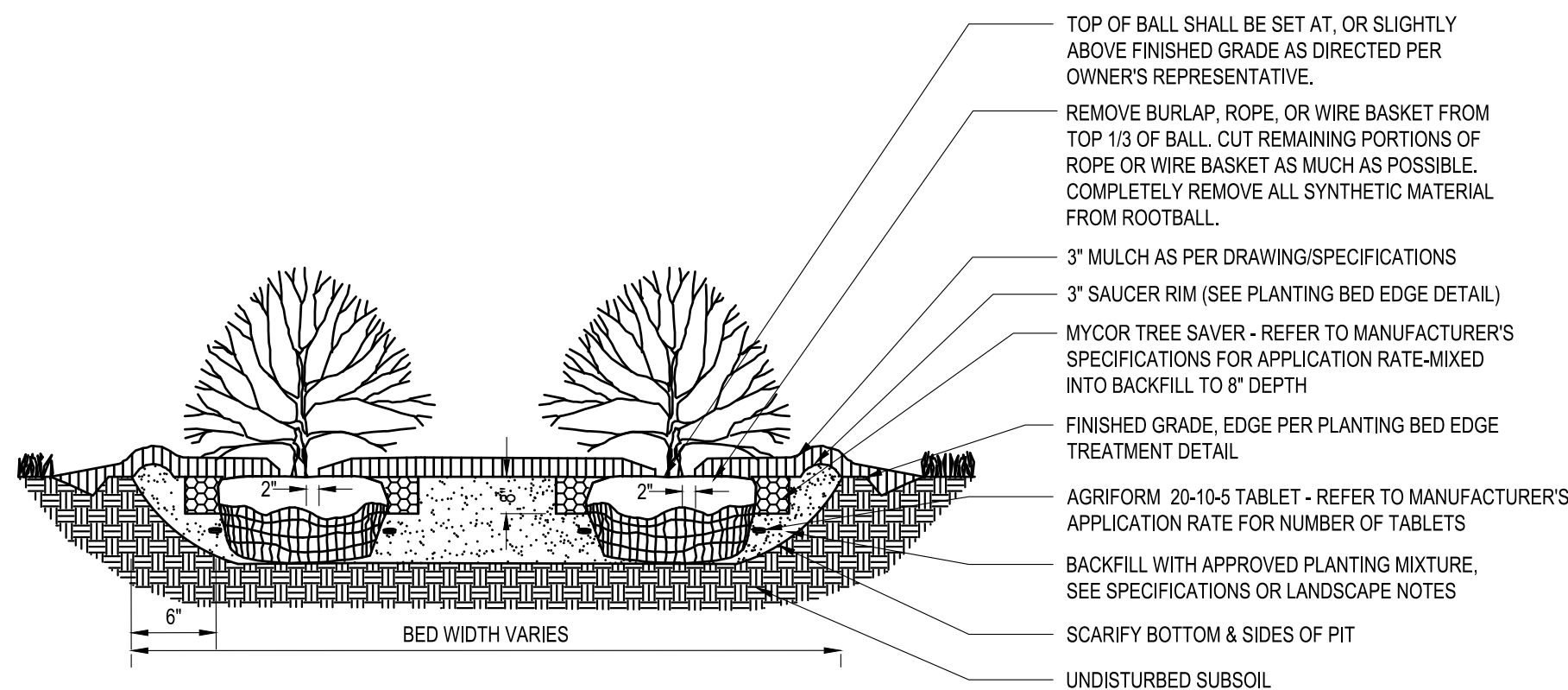
Key	Qty.	Botanical Name	Common Name	Mature Size Height Spread	Installed Size	Condition	Notes
<b>Ornamental Grasses</b>							
PV	15000	Panicum virgatum 'Shenandoah'	Shenandoah Red Switch Grass	3-4' Ht. 2-3' Sprd.	DP50	Cont.	18" O.C.

**NOTES:**

- MAINTAIN A 3" MINIMUM RADIUS CLEAR OF MULCH AROUND THE TRUNK.
- THE DISTANCE BETWEEN THE BOTTOM OF THE TRUNK FLARE AND THE FINISHED GRADE SHALL BE AS FOLLOWS:
  - FOR SANDY OR LOAMY SOILS: 1"
  - FOR CLAY OR POORLY DRAINED SOILS: 3"THE CONTRACTOR SHALL REVIEW THE APPROPRIATE PLANTING DEPTH WITH THE OWNER'S REPRESENTATIVE PRIOR TO INSTALLATION.
- WHEN TAGGING TREES AT THE NURSERY, MARK THE NORTH SIDE OF THE TREE IN THE FIELD AND WHEN INSTALLING, ROTATE TREE TO FACE NORTH WHENEVER POSSIBLE.
- FOR TREES 4" CAL. OR GREATER, INSTALL GUY AS PER DECIDUOUS TREE PLANTING GREATER THAN 4" CAL. DETAIL IN THE SAME CONFIGURATION AS SHOWN ABOVE.

**DECIDUOUS TREE PLANTING ON SLOPE (LESS THAN 4" CAL.)**

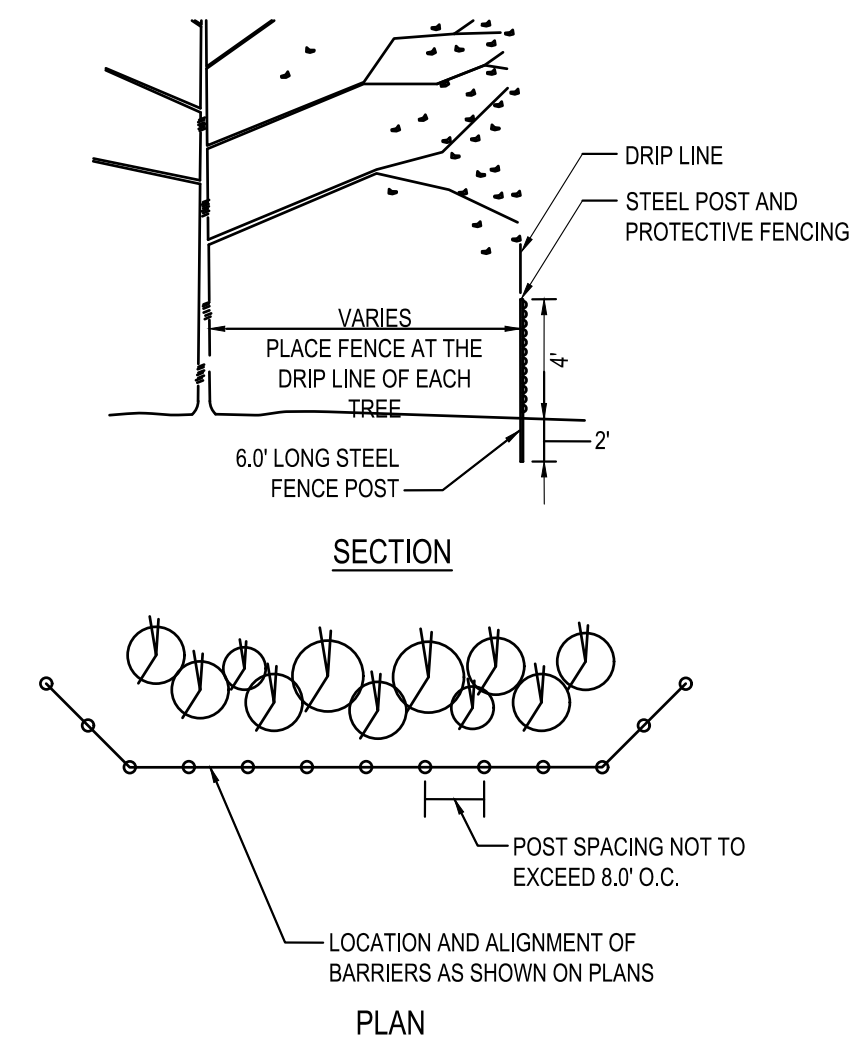
N.T.S.

**NOTES:**

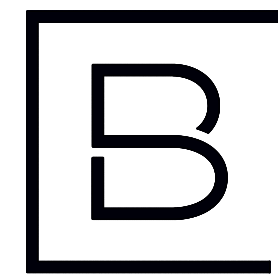
- MAINTAIN A 2" MINIMUM RADIUS CLEAR OF MULCH AROUND THE TRUNK.
- PLANTING BED DEPTH IN LAWN AREAS SHALL BE A MINIMUM OF 18" DEEP AND/OR AS DIRECTED BY THE OWNER'S REPRESENTATIVE.
- ALL PLANTING BEDS SHALL BE FREE OF CONSTRUCTION DEBRIS.

**SHRUB PLANTING**

N.T.S.

**VEGETATION PROTECTION BARRIER DETAIL**

N.T.S.

**BERGMANN**  
ARCHITECTS ENGINEERS PLANNERS2 Winners Circle, Suite 102  
Albany, NY 12205

www.bergmannpc.com

office: 518.862.0325

**POWER FLEX**805 THIRD AVENUE  
NEW YORK, NY 10022**500 MAMARONECK  
AVE SOLAR PROJECT**500 MAMARONECK AVENUE  
HARRISON, NY 10528

Date Revised	Description
10/12/2021	UPDATED PER TOWN COMMENTS
12/27/2021	UPDATED PER TOWN COMMENTS
05/13/2022	UPDATED STORM DESIGN
06/03/2022	UPDATED STORM DESIGN
09/08/2022	UPDATED DETAIL PER NYSDEC COMMENTS

**ISSUED FOR PERMIT**Copyright © Bergmann Associates, Architects, Engineers,  
Landscape Architects & Surveyors, D.P.C.

Project Manager	Discipline Lead
<b>ECR</b>	<b>ECR</b>
Designer	Reviewer
<b>MS</b>	<b>ES</b>
Date Issued	Project Number
<b>08/20/2021</b>	<b>14064.10</b>

Sheet Name

**LANDSCAPE PLAN  
AND LANDSCAPE  
DETAILS**

Drawing Number

**C131**

14 of 14